

VU+ LOGGER PACK

Data Logging with younger students

Built-in
Bluetooth



Also available as a 5 set class pack
in a Gratnells charging tray

A complete solution, contains everything required for Data Logging with students aged 6-14.

The pack contains:

- Vu+ USB & Bluetooth Data Logger:
 - Built-in Temperature, Sound & Light sensors
 - 2x Plug-in sensor sockets
 - Large graphical display
 - Built-in rechargeable battery
- 1x Plug-in Temperature sensor
- USB lead & lanyard
- Works with PC Windows, Apple OS X, Apple iOS, Android and Chromebook
- Free download of the eBook of activities
- Free access to web based CPD training
- Supplied in a Gratnells SmartCase



Data Harvest Group Ltd. 1 Eden Court, Leighton Buzzard,
Bedfordshire, LU7 4FY. UK

www.data-harvest.co.uk • sales@data-harvest.co.uk

T: +44 1525 373666 • F: +44 1525 851638



V-LOG DATA LOGGER



VU+ DATA LOGGER



DM353/1

EasySense Data Logging

Award winning solutions for Science Education

V-HUB INTERFACE



VISION DATA LOGGER



SMARTQ SENSORS



EASYSense SOFTWARE



Designed & Manufactured in the UK 

Available from:


V-LOG DATA LOGGER

Cost effective, connected & remote data capture



The V-Log range is at home in all departments. With a large LCD display, USB connectivity and a rechargeable battery as standard, this range offers all of the features you need at a ground breaking price!

V-Log⁴

- Large LCD Display
- Works with PC Windows, Apple OS X, Apple iOS, Android and Chromebook
- Fast data logging for Physics (50k per sec)
- Up to 14 days remote logging
- 4 Plug-in SmartQ sensors
- USB connectivity
- Optional Wi-Fi module 

For even greater value, consider the V-Log⁸ with 4 additional built-in sensors:

V-Log⁸

- Light Sensor
- Humidity Sensor
- Sound Sensor
- Air Pressure Sensor

At home in the lab and on field trips



Also available as a 5 set class pack in a Gratnells charging tray

V-HUB INTERFACE

Fast, simple & connected data capture



V-Hub works with the entire SmartQ sensor range, providing low-cost four channel wired and wireless data capture.

With a built-in rechargeable battery, V-Hub runs for the whole day, with no power cables in the classroom or battery replacing!

V-Hub⁴

- LCD Display
- Works with PC Windows, Apple OS X, Apple iOS, Android and Chromebook
- Fast data logging for Physics (50k per sec)
- 4 Plug-in SmartQ sensors
- USB & Bluetooth connectivity
- Optional Wi-Fi module 

For even greater value, consider the V-Hub⁸ with 4 additional built-in sensors:

V-Hub⁸

- Light Sensor
- Humidity Sensor
- Sound Sensor
- Air Pressure Sensor

Lab based with tablets & laptops



Also available as a 5 set class pack in a Gratnells charging tray

VISION DATA LOGGER

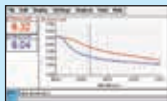
The complete measuring system

A stand alone, 4 channel data logger, which offers all the quality and benefits you have come to expect from Data Harvest.

VISION Data Logger has the full award winning EasySense software built-in!



- Colour Touch-screen LCD display
- Works with PC Windows, Apple OS X, Apple iOS, Android and Chromebook
- Fast data logging for Physics (50k per second)
- 14 days remote logging on a single charge
- Connect to a Projector for class experiments
- Optional Wi-Fi version
- Optional add-on Bluetooth USB adaptor



Graph



Snapshot



Timing

Versatile, Simple, Effective!



Also available as a 5 set class pack in a Gratnells charging tray

SMARTQ SENSORS

For V-Hub, V-Log & VISION

Beneath SmartQ's simple and bright exterior is a revolutionary architecture that dramatically enhances the accuracy and versatility of the entire range.

The manufacturing process includes individual calibration and hand testing of every sensor.



- Accelerometer
- Anemometer
- Breathing Rate Belt
- Carbon Dioxide
- Charge
- Colorimeter
- Conductivity
- Count/Tachometer
- Crocodile Clips
- Current
- Drop & Bubble Counter
- ECG
- Foot Switch
- Force
- Gas Pressure
- Geiger Muller
- Heart Rate & Pulse
- Humidity
- Infrared
- K-Type Thermocouple
- Light Gate
- Light Level
- Magnetic Field
- Motion
- Oxygen
- pH
- Polar Heart Rate
- Push Button Switch
- Rain Gauge
- RF Electrosmog
- Rotary Motion
- Sound
- Speed of Sound
- Spirometer
- Stethoscope
- Temperature
- Timing Mats
- Ultra-violet
- Voltage



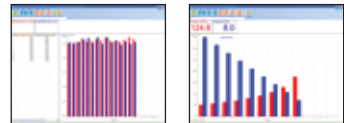
Subject specific sensor packs available in Gratnells trays

Auto ID and Calibration - Plug & Play Sensors

EASYSense SOFTWARE

Advanced tools for data capture and analysis

Data capture made easy with the award winning EasySense software, the foundation of our data logging system.



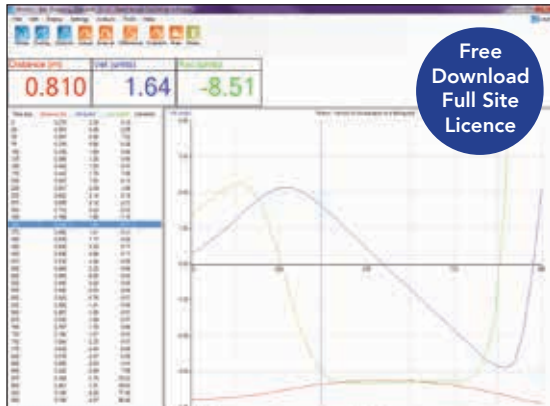
Timing

Snapshot



Scope

Meters



Graph

*Features may vary across platforms

Supported Platforms

The full EasySense software is available as a free download on all platforms:

EasySense is available in 19 languages



Apple iOS
App Store



Android & Chromebook
Google Play Store



Apple OS X
Mac App Store



Windows PC
data-harvest.co.uk

EasySense Features

A comprehensive set of tools, providing everything required to capture, analyse and report!

Logging Options

- Graph
- Snapshot
- Scope
- Pictogram
- Timing
- Counting
- Meters

Display Options

- Line Graph
- Point Graph
- Bar Graph
- X-Y Plotting
- Multiple Graphs
- Overlay Mode
- Table

Analysis Tools

- Values
- Interval
- Difference
- Gradient
- Area
- Trial Fit
- Functional Plotting

More...

- Zoom
- Remote Logging
- Auto-scale
- Smoothing
- Selection Wizard
- Title Graph
- Export Data

Sharing Experiment Data

Multi-user Collaboration

Data is captured in real-time and instantly relayed to all of the devices in the group. At the end of the experiment, all devices have their own set of data, ready for inspection, analysis and reporting.

Catch Up Mode

This feature allows a student to catch up if they missed the experiment as it happened. It can also be used to ensure that all students have the same set of data to work with.

www.data-harvest.co.uk • +44 1525 373666

